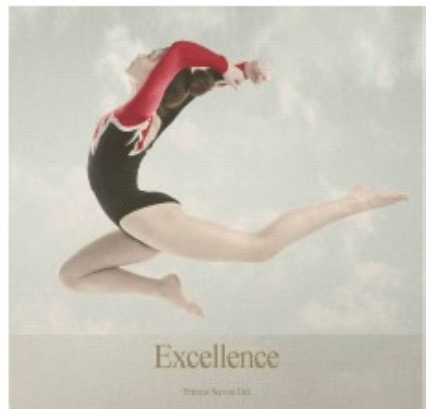
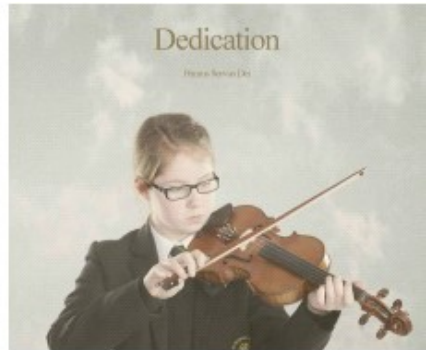




St Thomas More
Catholic Teaching School
Primus Servus Dei

Transition Passport



Name:

Form:



The transition to a new school is an exciting time! It is the next stage in your educational journey, where you will experience new events and challenges.

This passport is designed to introduce yourself to the year 7 tutor team so that we can find out more about you and to support you during your transition.

Your task is to work your way through the activities contained in this Passport, then submit the booklet to your tutor for collection in September.

We hope you enjoy completing the activities and putting together a profile of yourself, as we will enjoy reading it and getting to know you better.

We look forward to working with you and your family to ensure that the start of your educational journey at St. Thomas More is both happy and rewarding.

FACTS ABOUT MY NEW SCHOOL

www.st-thomasmore.org.uk



When you transfer to a new school it is important to find out as much information as you can. See how much you can fill in on this page and then talk to you friends about how you will find more information.

The name of my school is	
The address is	
The telephone number is	
What type of school is it?	
The name of the Head Teacher	
The name of my form and form tutor is	
My Head of Year will be	

THE STRUCTURE OF THE SCHOOL

There is a large number of staff at St Thomas More School and not all of them will be your subject teachers. Some teachers have special jobs to do for the school as well as teaching classes. There will be some teachers that look after the year groups and some who plan the subject teaching or write up the timetable. Progress coordinators look after students who are worried or sick. There are administrative staff that work in the office and people who cook wonderful meals for us to enjoy. There are also people who look after the building and grounds.

Find out who do the following roles in St Thomas More

1. Head Teacher _____
2. Deputy Head Teacher _____

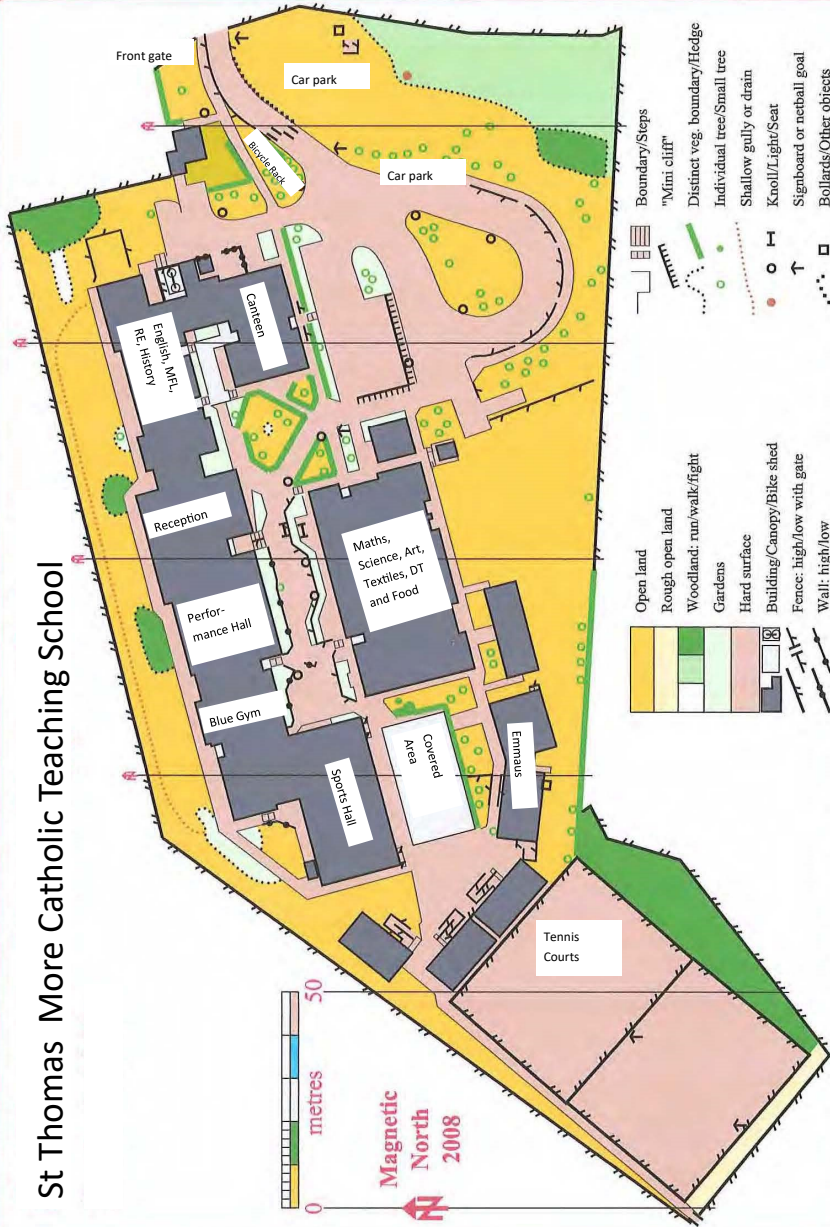
What do I do if I have a worry, concern or problem?

	Pastoral support	Subject based support
Who do I go to first if I have a problem or question?	Form Tutor	Class Teacher
If I need further help who do I go to?	Progress Coordinators	Head of Department

Another key member of staff is our SENDCo, Mrs Claxton, who is based in the Emmaus Centre.

All other staff are available to help you but the staff in the grid above will know you best.

St Thomas More Catholic Teaching School



YOUR TIMETABLE

Everyday you will go to different lessons. Each subject is taught in a different room, sometimes an ordinary classroom and sometimes a special room like a workshop or a computer room. Each subject has a different teacher so you will move around the school building throughout the day. Here is **an example** of a timetable for you to look at.

Top Tip: Colour code your timetable with colouring pencil. Each subject should be a different colour.

Below is an example of a timetable. Imagine it is a Sunday night and you need to pack your bag for school the next day.

Example Timetable for a Monday

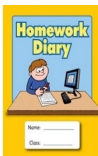
Lesson 1	Lesson 2	Break	Lesson 3	Lesson 4	Lunch	Lesson 5
Maths RD M1	English VM H12		PE HB Gym	Music DM Music		Science JO L7

The first line of the timetable is the subject you will be taking.

The second line shows you the teachers initials. This is the teacher taking your lesson.

The numbers at the bottom of the grid show you the room where the lesson is taking place.

What items do you think you would need to pack? Look carefully at the lessons and breaks you will be having that day. Circle the relevant items next to the rucksack and draw any others that you think you may need.



Personal Profile – What I want you to know about me

Create a Mind Map

Here are some ideas that might help you get started.

You don't have to use all of these unless you want to.



Hobbies

Friends



Family



The person you most admire and why?



Sports



Pets



Favourite music



Things you're good at

Favourite movie



Favourite food

Favourite subjects

Favourite books



My Mind Map



Feelings about St. Thomas More School

Make a list of what you think might happen on your first day at St. Thomas More Catholic Teaching School.

.....
.....
.....

At your new school do you think you will: (Circle the best answer)

Make new friends	YES	NO	Unsure
Have good teachers	YES	NO	Sometimes
Behave appropriately	YES	NO	Sometimes
Need to work hard	YES	NO	Sometimes
Learn lots of new things	YES	NO	Unsure
Enjoy yourself	YES	NO	Sometimes
Feel safe	YES	NO	Sometimes
Know what to do	YES	NO	Sometimes

The 3 things that you look forward to most about going to St. Thomas More Catholic Teaching School are:

- 1.
- 2.
- 3.

The 3 things that you are most uncertain about:

- 1.
- 2.
- 3.

Write down 3 questions you have about St. Thomas More Catholic Teaching School

.....
.....
.....

**Reasons why I am looking forward to attending St Thomas
More Catholic Teaching School**

**Reasons why I am nervous about transferring to St Thomas
More Catholic Teaching School**

<u>Foods I like to eat</u>	<u>My favourite subjects:</u>	<u>Subjects I find tricky:</u>
<u>Other information about myself that I would like to tell my new school:</u>	<u>Responsibilities I have at my school:</u>	<u>My pets:</u>
<u>Family I have at St Thomas More Catholic Teaching School</u>	<u>Hobbies/clubs I attend:</u>	<u>Teachers I know at St Thomas More Catholic Teaching School:</u>

My School Years So Far...

There will have been lots of activities you were involved in at school as well as achievements you are proud of. Here is the opportunity to tell your Year 7 tutor about them.

The **best things** about my school were:

.....

.....

.....

.....

Jobs and responsibilities I have held, for example:

- School responsibilities — including monitors, class captains etc.

- Occasions when you have represented your school

eg. Sporting, music, drama highlights etc.

.....

.....

.....

.....

My top five things that I have enjoyed most about school

	Event/Activity	Why?
1.		
2.		
3.		
4.		
5.		

Books I've enjoyed reading

Fill in the table below to introduce us to your favourite books and authors.

Title	Author

My Goals for St. Thomas More School

My goals for the first term at St. Thomas More:

Goal (e.g. learning, friendships and relationships, extra-curricular activities)	To achieve this goal I will...
1.	
2.	
3.	
4.	
5.	
6.	
7.	
8.	
9.	
10.	

My Life Goals:

Goal (e.g. Ambitions, career, hobbies)	To achieve this goal I will...
1.	
2.	
3.	
4.	
5.	
6.	
7.	
8.	
9.	
10.	

Work I am Proud Of



Attach three pieces of your work at the end of this passport.
Make sure you include a piece of writing.

Please note: We don't want you to create extra pieces of writing for your Portfolio rather, we would like you to select work you completed during Year 6 — or maybe even Year 5.

Fill in the table of contents for your Writing Portfolio. Include all information about each piece you have selected:

Piece 1

Title

Purpose

Subject

Reason for choice

Piece 2

Title

Purpose

Subject

Reason for choice

Piece 3

Title

Purpose

Subject

Reason for choice



Transition Tasks

I am asking students who are joining Year 7 in September to complete a short task for Literacy, Maths and Science. This passport must be brought to your first lesson in these subjects. These tasks should not take more than a couple of hours. You should not feel under any pressure to over-do it and write lots when they should be enjoying their well-earned summer break.

The purpose of these tasks is to give your teacher an early indication of your capacities. The transition task therefore provides a way for you to work out where your strengths and weaknesses are and to get on top of this early GCSE material.

I look forward to seeing the fantastic work you will complete with these tasks.

Miss Millar

Literacy Practice

Q1 Rewrite these sentences including **capital letters** and **punctuation** to the end of the sentence.

A) george orwell wrote 'animal farm'

.....

B) the Usa wanted to protect the environment

.....

C) romeo and juliet asked friar Laurence for help

.....

D) mount Everest is in the himalayas

.....

Q2 Add a pair of brackets to each of these sentences.

A) Tsunamis large sea waves can be caused by an earthquake or volcanic eruption.

B) The nativity story the story of Jesus's birth is told in the Bible.

C) The soil on the island is shallow about 20 cm deep

D) Make a range of points in your essay one per paragraph

Literacy Practice

Q3 Add **commas** in the correct places in the sentences below.

- A) Tourists can bring more traffic to an area which increases pollution.
- B) Great Britain France Italy and Spain are all part of Europe.
- C) 'Pride and Prejudice' written by Jane Austin was published in 1813.
- D) Although it takes time make sure you check your work for errors.

Q4 Add **semicolons** in the correct places in the sentences below.

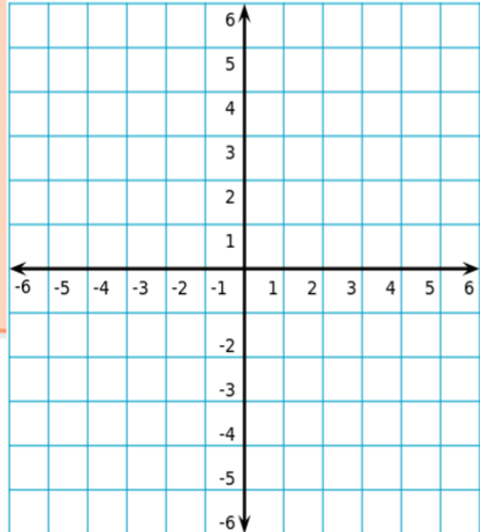
- A) Earthquakes can result in people being trapped in their homes aftershocks can sometimes make rescue attempts difficult.
- B) Life in the trenches was very dangerous many soldiers died or were wounded there.
- C) Gatsby is a character in a novel he has friends that have vast amounts of money.

Maths Tasks

Investigation

- 1 Draw a pair of x - and y -axes from -6 to $+6$.
- 2 Plot these points.
A(1, 2) B(3, 6) C(5, 2)
- 3 Join them in order. What shape have you made?
- 4 Draw a rectangle on your grid.
Write down the coordinates of its **vertices**.
Give the coordinates to a partner to plot.
Have they drawn the same rectangle?
- 5 Write down the coordinates for other quadrilaterals and triangles.
Give the coordinates to a partner to plot.
- 6 Write down the coordinates for a triangle where all the x - and y -values are negative.

Problem-solving / Reasoning



Investigation

- 1 Choose any row, column or complete diagonal from the grid.

	1st	2nd	3rd	4th	5th	6th
A	4	7	2	6	5	1
B	10	0	3	5	2	9
C	4	3	3	7	2	8
D	5	1	0	4	0	10
E	3	9	1	1	1	8
F	5	0	9	10	2	6

- 2 Work out the range and median.
- 3 Repeat steps 1 and 2 for five more sets of numbers.
- 4 Find a row with range 6.
- 5 Which column has a median of 2?
- 6 Which diagonal has the highest range?

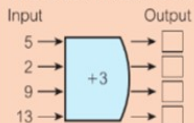
Problem-solving



Investigation

Reasoning

This function machine decodes the secret message 5 2 9 13.



1 Work out the outputs of the function machine.

The table shows the letters of the alphabet with a code number.

1	2	3	4	5	6	7	8	9	10	11	12	13
a	b	c	d	e	f	g	h	i	J	k	l	m
14	15	16	17	18	19	20	21	22	23	24	25	26
n	o	p	q	r	s	t	u	v	w	x	y	z

2 Use the table to work out a letter for each output number.

3 What word does the secret message spell?

4 Work out a secret message for a partner to decode.

You must give them the input values and the function, and they have to work out the output values and the message.

Q2 hint

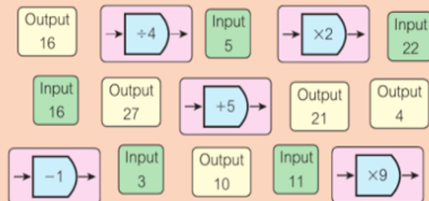
When the output is 20, the letter is t.



Investigation

Problem-solving

Here are 5 input, 5 output and 5 function cards.



Work with a partner to organise the cards into their correct groups of three.

There should be no cards left over.

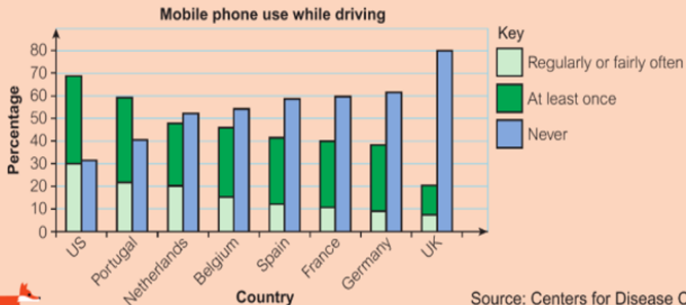


Investigation

Real / Problem-solving

People in different countries were asked how often, during the last 30 days, they had talked on their mobile phones while driving. The chart shows the results.

Write a news story about the data shown in the graph. Don't forget to give it a headline.



Source: Centers for Disease Control and Prevention

Investigation

Problem-solving / Reasoning

- What is the probability of flipping heads with a coin?
- What is the probability of *not* flipping heads with a coin?
- Add the two probabilities together.
- What is the probability of rolling a 3 with an ordinary dice?
- What is the probability of *not* rolling a 3 with an ordinary dice?
- Add the two probabilities together.
- Write a general rule for adding together the probability of an event happening and the probability of it *not* happening.



Investigation

Problem-solving / Reasoning

Pick a counter

Kayla puts red, green, yellow and black counters in a bag. She picks a counter at random.

The probabilities of getting each of the colours are:

green $\frac{1}{4}$ red $\frac{1}{2}$ yellow $\frac{1}{5}$ black $\frac{1}{20}$

What is the smallest number of counters that there could be in the bag?

How many counters of each of the colour are in the bag?



Science Task

Task:

Research a famous scientist and create a factsheet on them.

This can be using the format shown on the next page or your own but try to include all of the information suggested.

Some ideas of scientist are given below but you can pick one of your own.

Albert Einstein

Charles Darwin

Dmitri Mendeleev

Rita Levi-Montalcini

Ernest Rutherford

Galileo Galilei

Ivan Pavlov

Marie Curie

Nikola Tesla

Richard Feynman

Isaac Newton

Rosalind Franklin

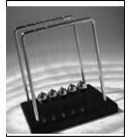


Sir Isaac Newton



About

Born:
Died:
Nationality:



About me

The things I am most famous for...

Work, education and personal life...

History by year

Logic Puzzle

You are on an island and there are three crates of fruit that have washed up in front of you. One crate contains only apples. One crate contains only oranges. The other crate contains both apples and oranges.

Each crate is labelled. One reads “apples”, one reads “oranges”, and one reads “apples and oranges”. You know that NONE of the crates have been labelled correctly — they are all wrong.

If you can only take out and look at just one of the pieces of fruit from just one of the crates, how can you label **ALL** of the crates correctly?

.....
.....
.....
.....
.....

At a cafe in the city, Ms Pink, Ms Purple, and Ms Green meet for lunch. Under their jackets they are wearing either a pink, purple, or green dress.

Ms Purple says, “Hey, did you notice we are all wearing different coloured dresses from our names?” The lady wearing the green dress says, “Wow, Ms Purple, that’s right!”

Can you tell who is wearing which coloured dress?

.....
.....
.....
.....
.....
.....
.....
.....



***Thank you for taking the time to complete your passport
to St. Thomas More School***



St Thomas More
Catholic Teaching School
Primus Servus Dei

Please do not hesitate to contact the school should you require further information.

Tel: 01234 400222

Fax: 01234 400223

Email: vmillar@stm.beds.sch.uk

Address:

St Thomas More Catholic Teaching School
Tyne Crescent
Bedfordshire
MK41 7UL